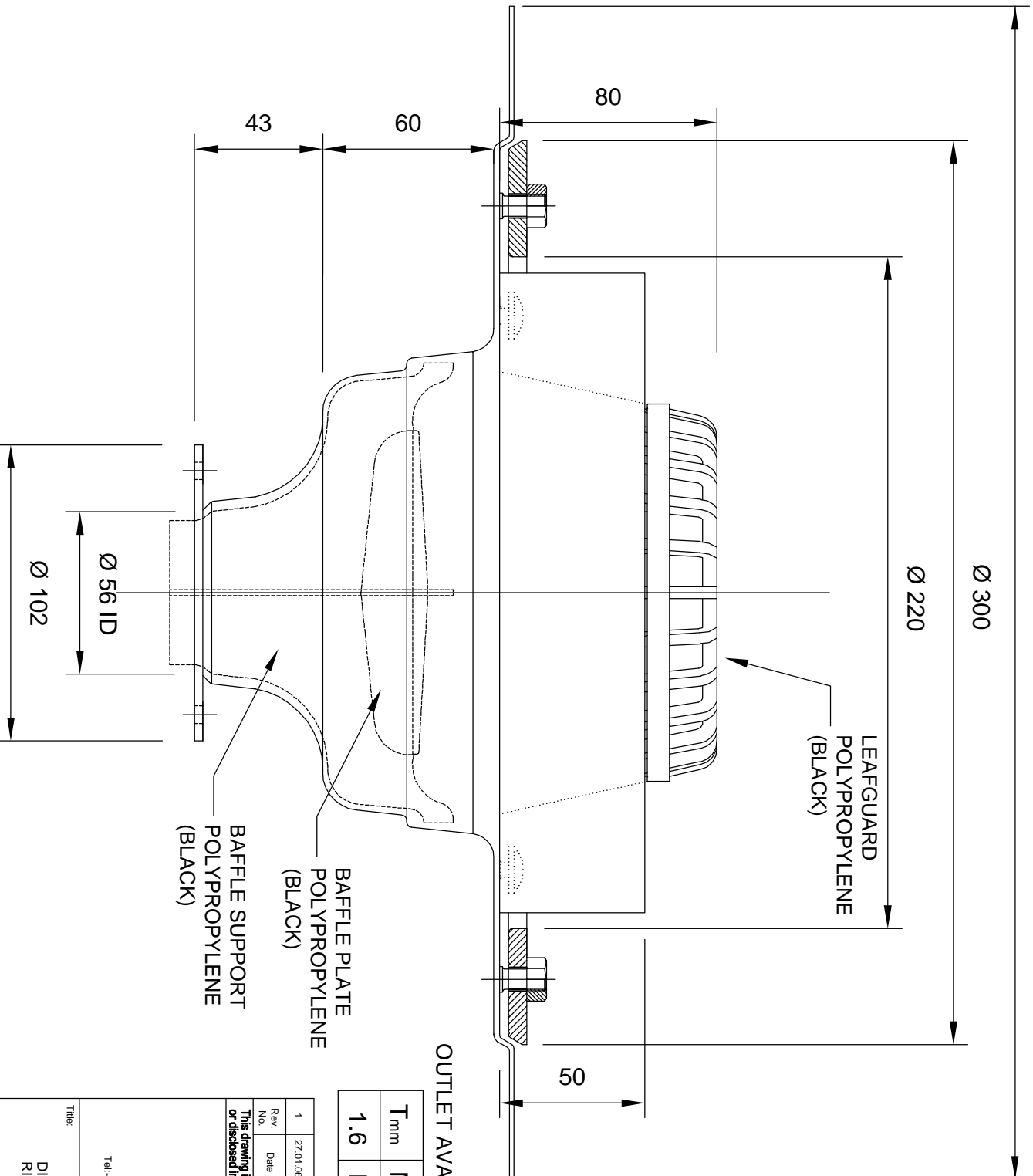


TYPE:-PRIMAFLOW™ EURO-CLAMP RING Ø 56mm SECONDARY OUTLET

- NOTES**
- 1) DO NOT SCALE FROM THIS DRAWING USE FIGURED DIMENSIONS ONLY.
 - 2) DIMENSIONS SUBJECT TO MANUFACTURING TOLERANCES.
 - 3) THIS DRAWING IS COMPUTER GENERATED COPIES ARE AVAILABLE ON 3.5", CD ROM AND E-MAIL IN AUTOCAD AND .DXF FORMAT.



OUTLET AVAILABLE IN FOLLOWING MATERIALS :-

T mm	Material
1.6	Mild steel

1	27/01/06	OVERALL FLANGE SIZE REVISED TO EURO-CLAMP	LJD	DB	MB
Rev No.	Date	Description	Drn. By	Chkd. By	App. By

This drawing is the property of FULLFLOW LIMITED and must not be used, loaned, reproduced or disclosed in whole or in part to third parties without the company's written permission.



Scales:		NTS	
Dm By:	SE	Drn. By:	SE
Chkd By:	DB	App. By:	MB
Date:	October/2000		

Title:
DIMENSIONAL DETAIL OF CLAMP RING 56mm SECONDARY OUTLET

Drawing No:	SD014	Rev:	1
Cad Ref:	SD014		